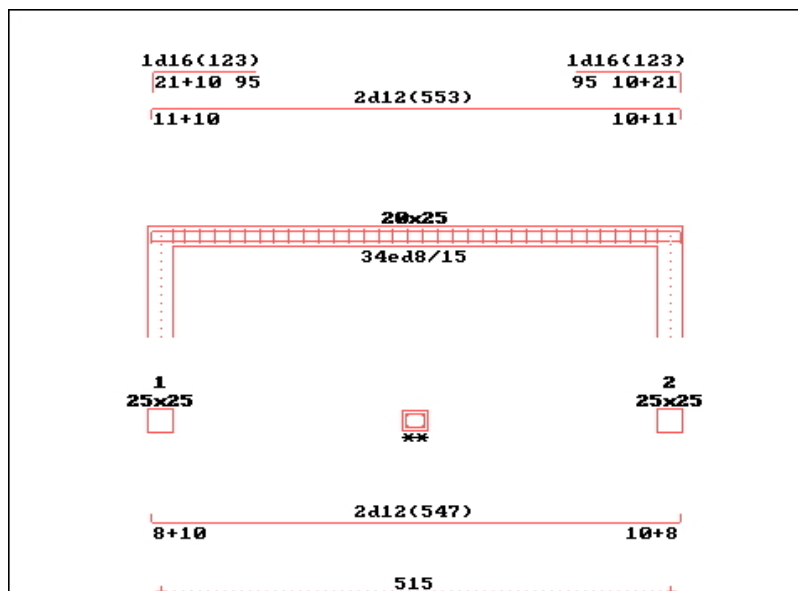
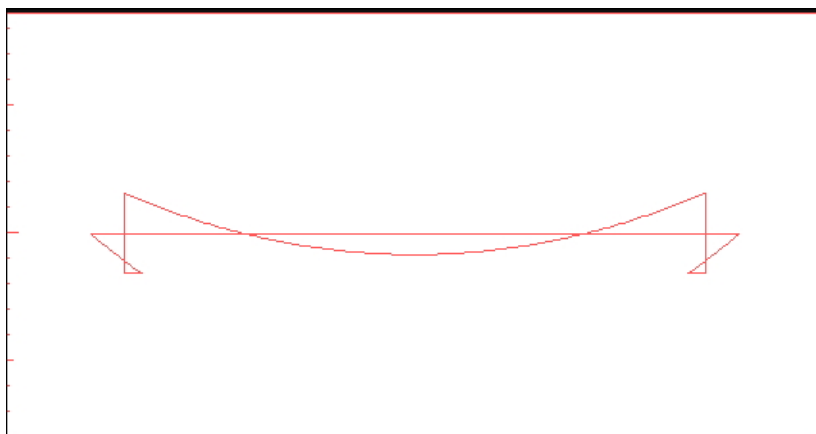


Viga V1

VIGA1	11-SEP-19
=====	
DADOS DE CARGAS	
=====	
PIS.	TRAMO N. 1
=====	
PERMANENTES	
Unif. Compri.	7.245 5.150
=====	

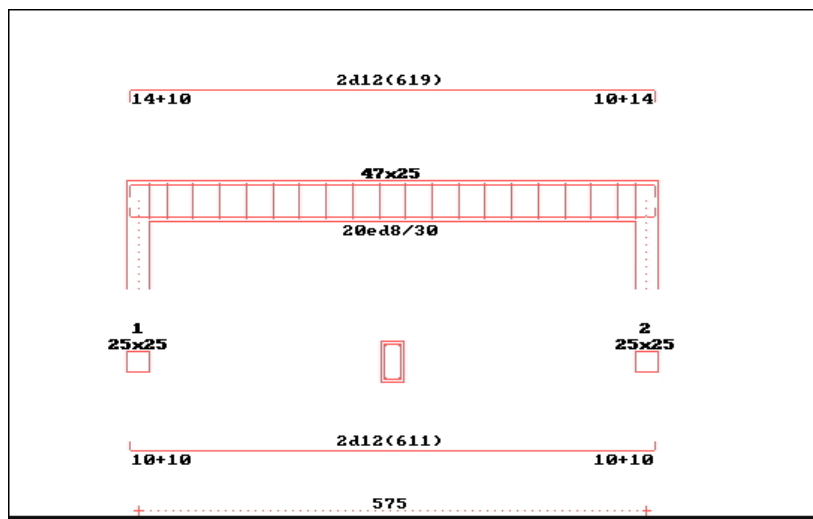
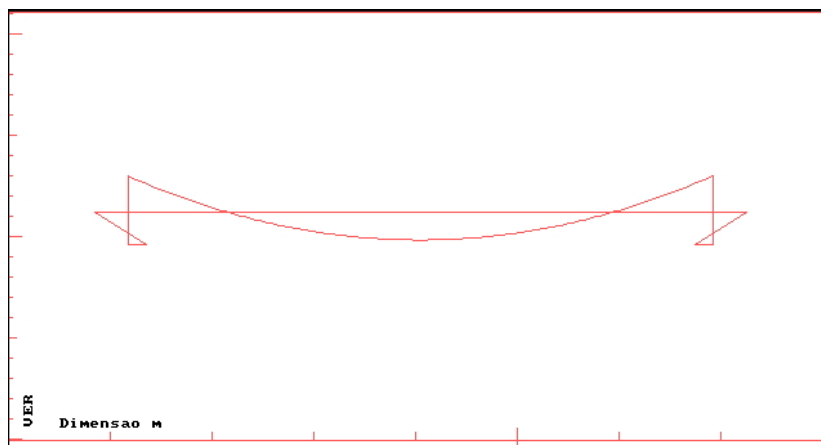
VIGA1	11-SEP-19
=====	
ESFORÇOS EM VIGAS	
=====	
PIS.	TRAMO N. 1
=====	
ACÇÃO VERTICAL	
Mesq.Mdir.kN.m	-15.8 -15.8
Mpos. Norm. kN	8.24 78.9
Tesq. Tdir. kN	-18.7 18.7
=====	



Viga V2

VIGA 2	2-JUN-21
DADOS DE CARGAS	
PIS.	TRAMO N. 1
SOBRECARGAS	
Unif. Compri.	7.245
ALTERNANCIA	

VIGA2	2-JUN-21
ESFORÇOS EM VIGAS	
PIS.	TRAMO N. 1
ACÇÃO VERTICAL	
Mesq. Mdir. kN.m	-17.0 -17.0
Mpos. Norm. kN	12.9 85.1
Tesq. Tdir. kN	-20.8 20.8



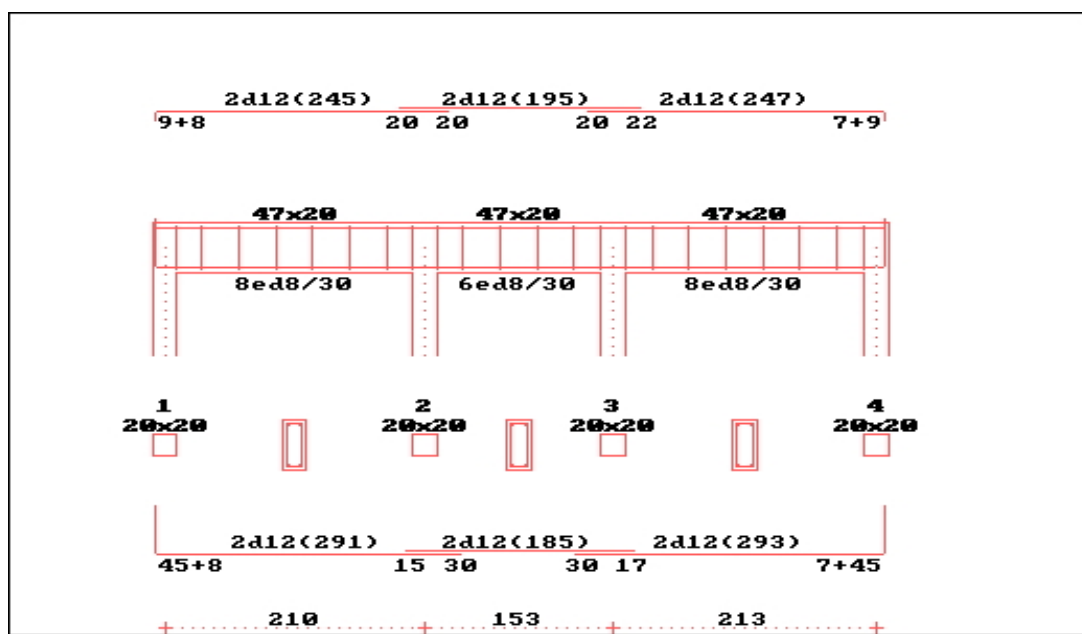
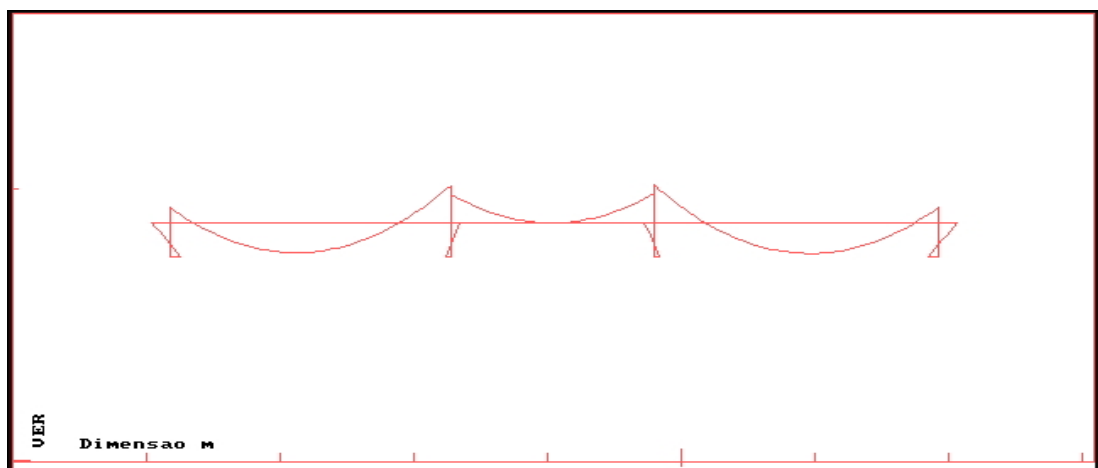
Viga V3

VIGA3										2-JUN-21									
DADOS DE CARGAS																			
PIS.		TRAMO N. 1				TRAMO N. 2				TRAMO N. 3									
PERMANENTES																			
Unif. Compri.		3.598		2.100		3.598		1.530		3.598		2.130							

VIGA3							2-JUN-21
=====							
ESFORÇOS EM VIGAS							

PIS.	TRAMO	N. 1	TRAMO	N. 2	TRAMO	N. 3	

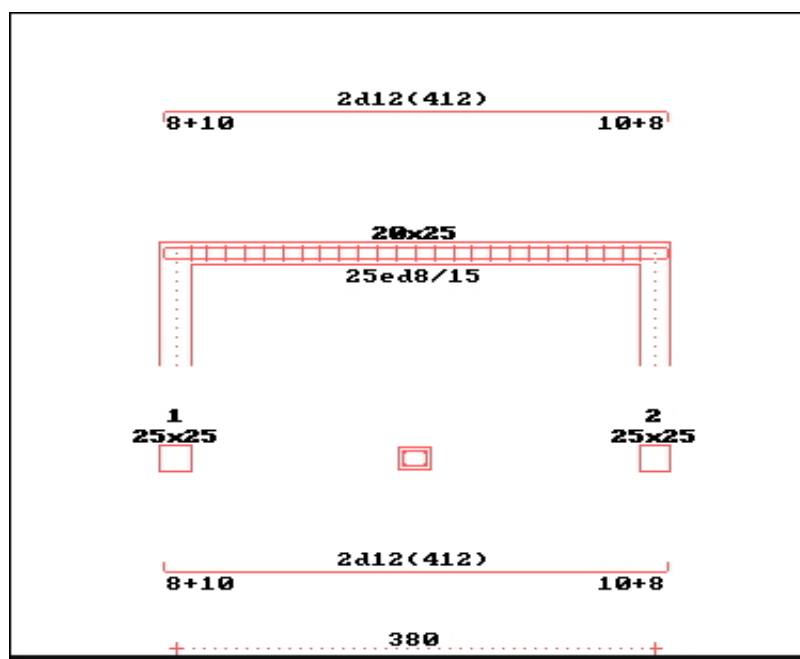
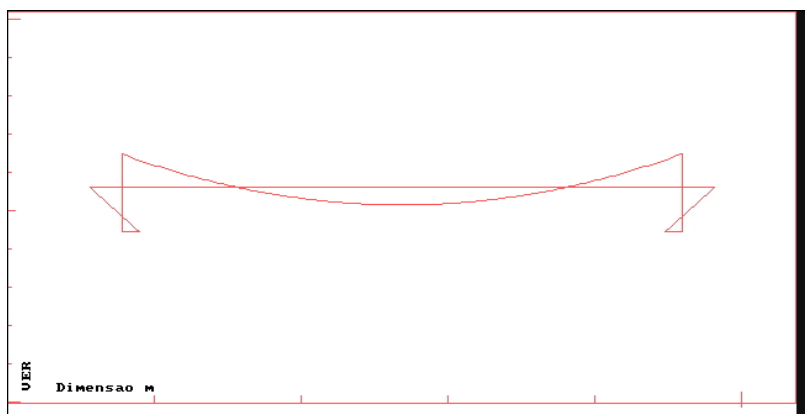
ACÇÃO VERTICAL							
Mesq.Mdir.kN.m	-0.56	-1.32	-1.04	-1.07	-1.36	-0.57	
Mpos. Norm. kN	1.06	2.78	-0.007	1.41	1.09	2.85	
Tesq. Tdir. kN	-3.41	4.14	-2.73	2.77	-4.20	3.46	



Viga V4

VIGA3	11-SEP-19
DADOS DE CARGAS	
PIS.	TRAMO N. 1
PERMANENTES	
Unif. Compri.	7.245 3.800

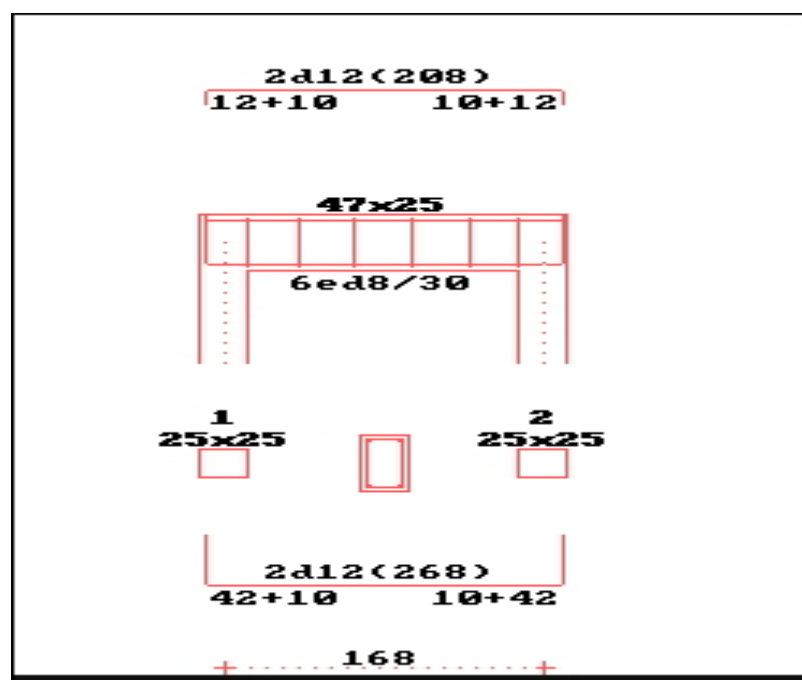
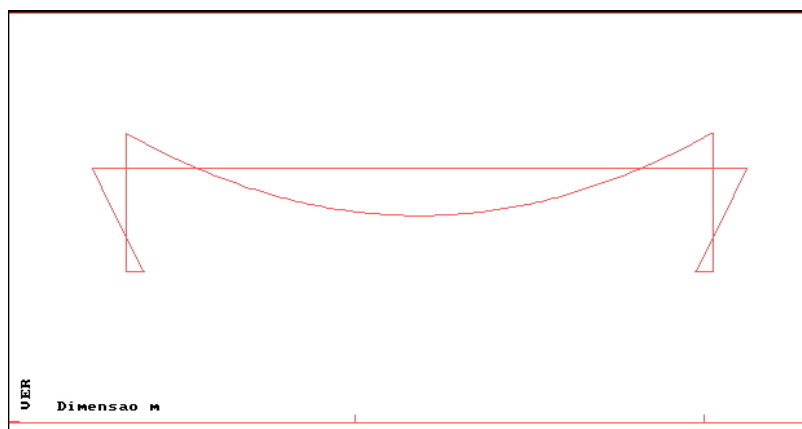
VIGA3	11-SEP-19
ESFORÇOS EM VIGAS	
PIS.	TRAMO N. 1
ACÇÃO VERTICAL	
Mesq.Mdir.kN.m	-8.55 -8.55
Mpos. Norm. kN	4.53 42.7
Tesq. Tdir. kN	-13.8 13.8



Viga V5

VIGA5	11-SEP-19
=====	
ESFORÇOS EM VIGAS	
=====	
PIS.	TRAMO N. 1
=====	
ACÇÃO VERTICAL	
Mesq. Mdir. kN.m	-0.53 -0.53
Mpos. Norm. kN	0.74 2.66
Tesq. Tdir. kN	-3.02 3.02
=====	

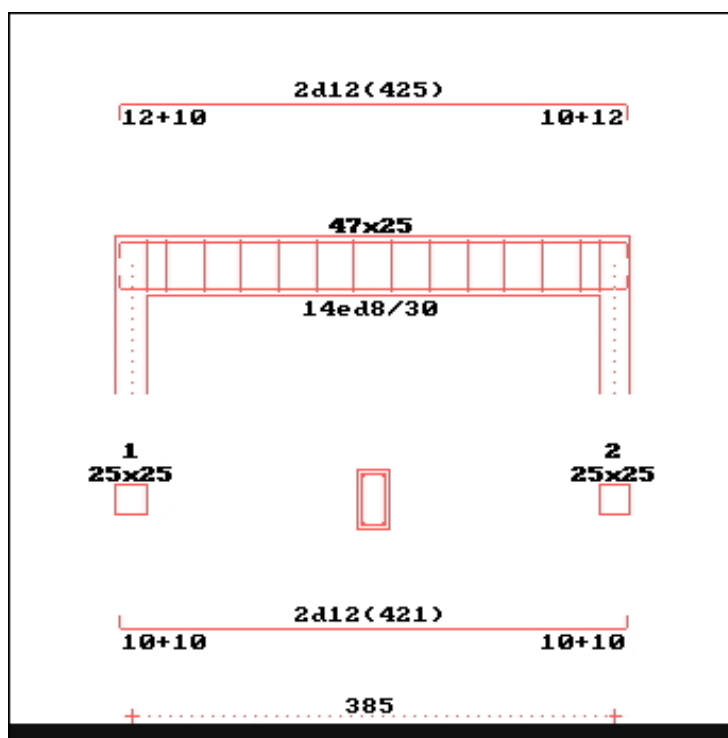
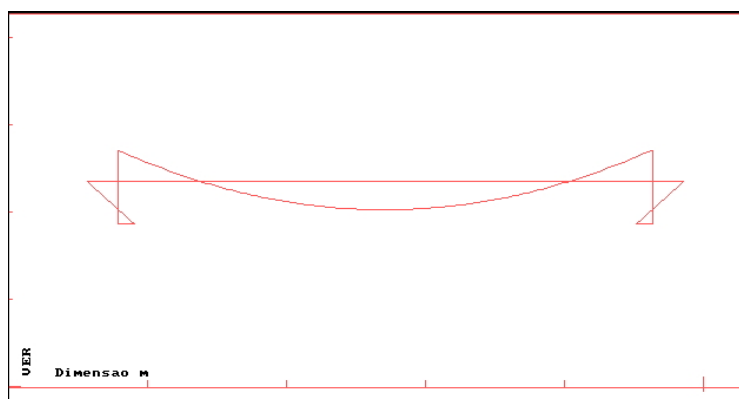
VIGA5	11-SEP-19
=====	
ESFORÇOS EM VIGAS	
=====	
PIS.	TRAMO N. 1
=====	
ACÇÃO VERTICAL	
Mesq. Mdir. kN.m	-0.53 -0.53
Mpos. Norm. kN	0.74 2.66
Tesq. Tdir. kN	-3.02 3.02
=====	



Viga V6

VIGA6	11-SEP-19
DADOS DE CARGAS	
PIS.	TRAMO N. 1
PERMANENTES	
Unif. Compri.	3.598 3.850

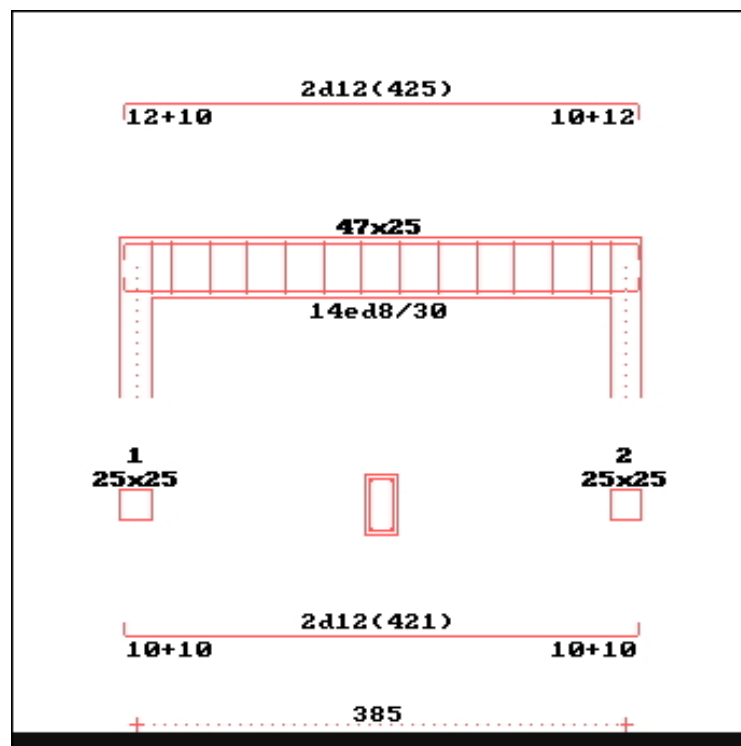
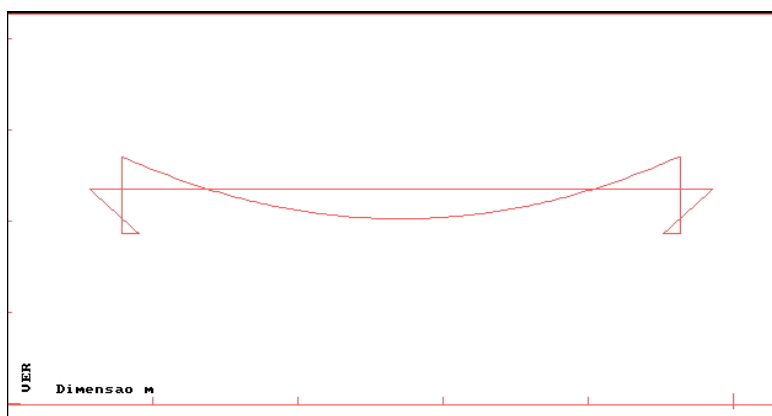
VIGA6	11-SEP-19
ESFORÇOS EM VIGAS	
PIS.	TRAMO N. 1
ACÇÃO VERTICAL	
Mesq. Mdir. kN.m	-3.53 -3.53
Mpos. Norm. kN	3.14 17.7
Tesq. Tdir. kN	-6.93 6.93



Viga V7

VIGA6	11-SEP-19
DADOS DE CARGAS	
PIS.	TRAMO N. 1
PERMANENTES	
Unif. Compri.	3.598 3.850

VIGA6	11-SEP-19
ESFORÇOS EM VIGAS	
PIS.	TRAMO N. 1
AÇÃO VERTICAL	
Mesq. Mdir. kN.m	-3.53 -3.53
Mpos. Norm. kN	3.14 17.7
Tesq. Tdir. kN	-6.93 6.93



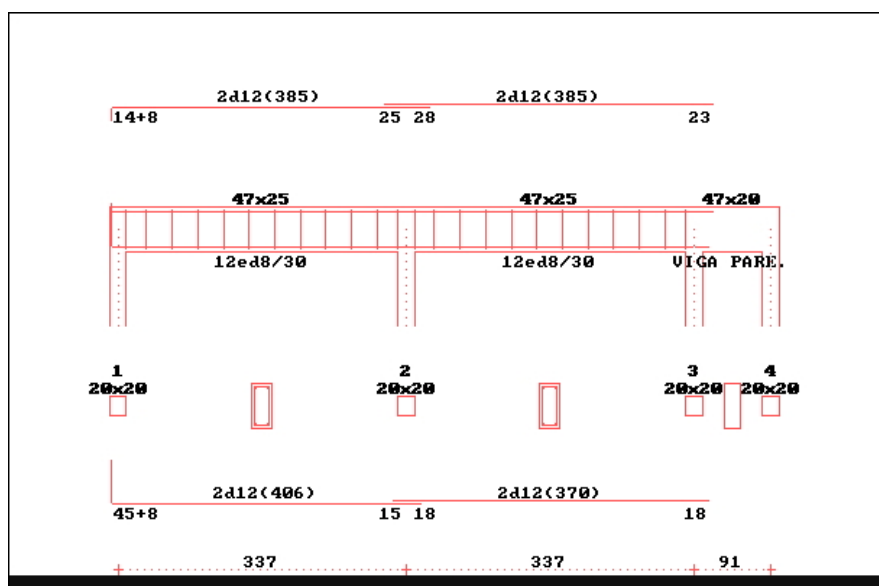
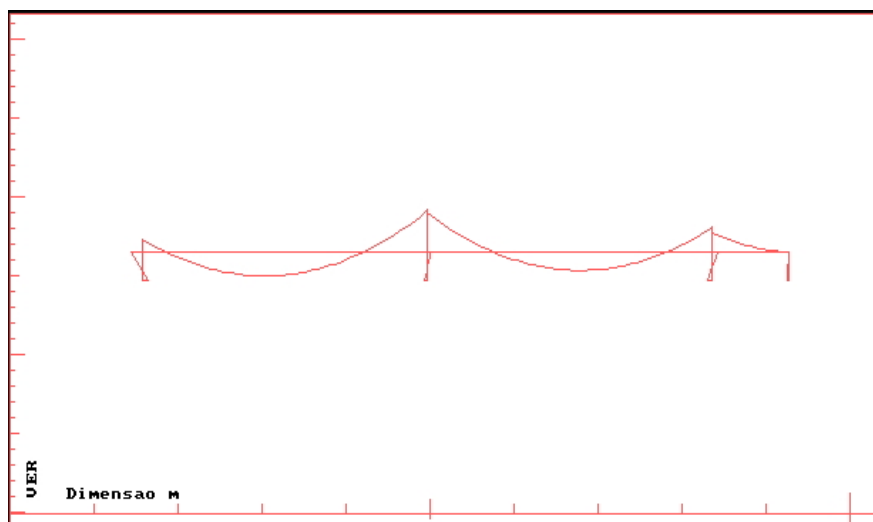
Viga V8

VIGAB							2-JUN-21						
=====													
DADOS DE CARGAS													

PIS.		TRAMO		N. 1		TRAMO		N. 2		TRAMO		N. 3	

PERMANENTES													
Unif. Compr.		21.30		3.370		21.30		3.370		21.30		0.910	

VIGAB							2-JUN-21
=====							
ESFORÇOS EM VIGAS							
=====							
PIS.	TRAMO	N. 1	TRAMO	N. 2	TRAMO	N. 3	
=====							
ACÇÃO VERTICAL							
Mesq.Mdir.kN.m	-7.78	-25.5	-23.4	-15.4	-11.4	-.089	
Mpos. Norm. kN	14.3	36.9	10.9	24.8		2.45	
Tesq. Tdir. kN	-30.7	41.1	-38.3	33.5	-22.1	-2.69	
=====							



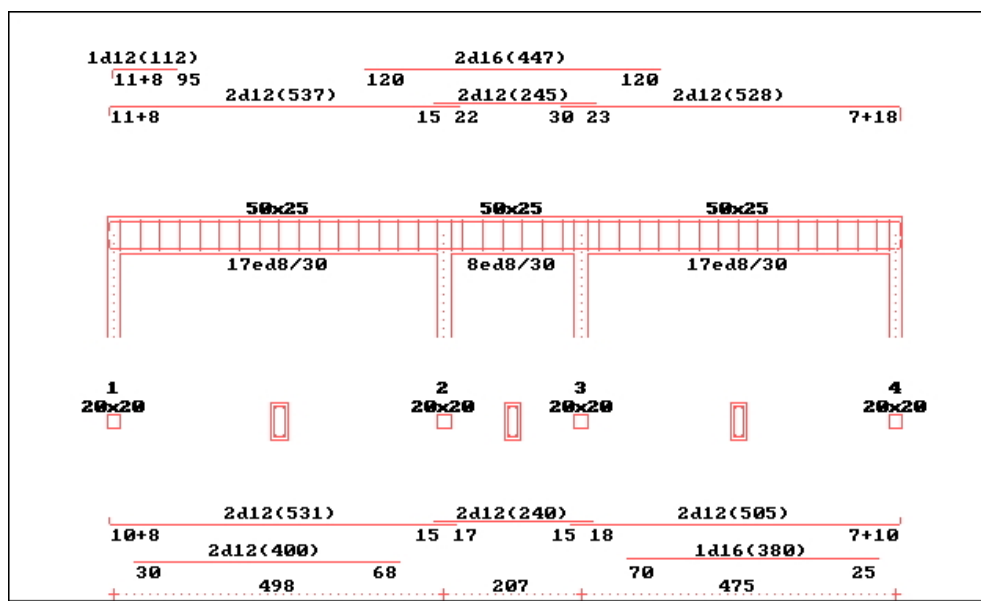
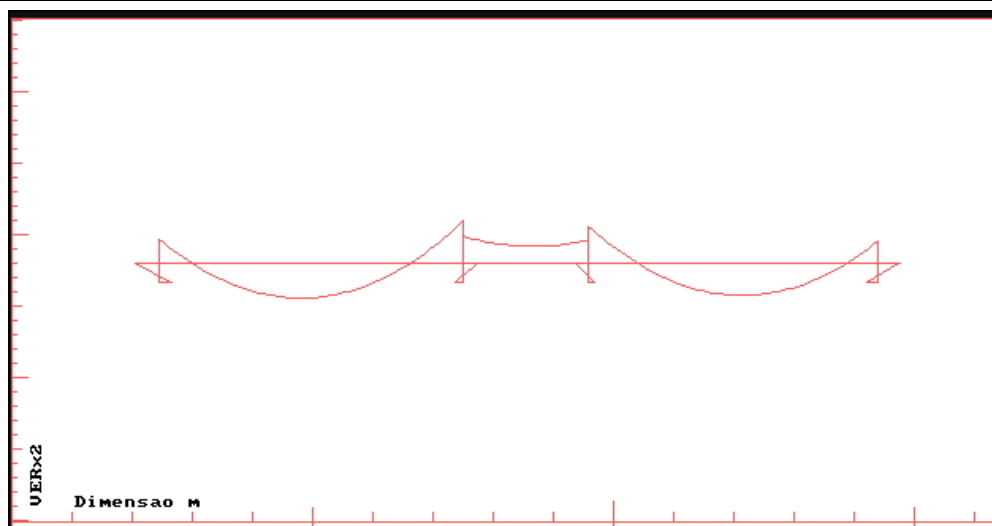
Viga V9

VIGA9							2-JUN-21						
=====													
DADOS DE CARGAS													

PIS.		TRAMO		N. 1		TRAMO		N. 2		TRAMO		N. 3	

PERMANENTES													
Unif. Compri.		28.50		4.980		21.30		2.070		28.50		4.750	

VIGA9	2-JUN-21					
=====						
ESFORÇOS EM VIGAS						
=====						
PIS.	TRAMO	N. 1	TRAMO	N. 2	TRAMO	N. 3
=====						
ACÇÃO VERTICAL						
Mesq.Mdir.kN.m	-31.9	-55.6	-36.0	-31.6	-49.1	-29.2
Mpos. Norm. kN	45.0	159	-22.3	60.3	41.5	147
Tesq. Tdir. kN	-66.2	75.7	-24.2	19.9	-71.9	63.5
=====						



Viga V10

VIGA10	2-JUN-21
=====	
DADOS DE CARGAS	

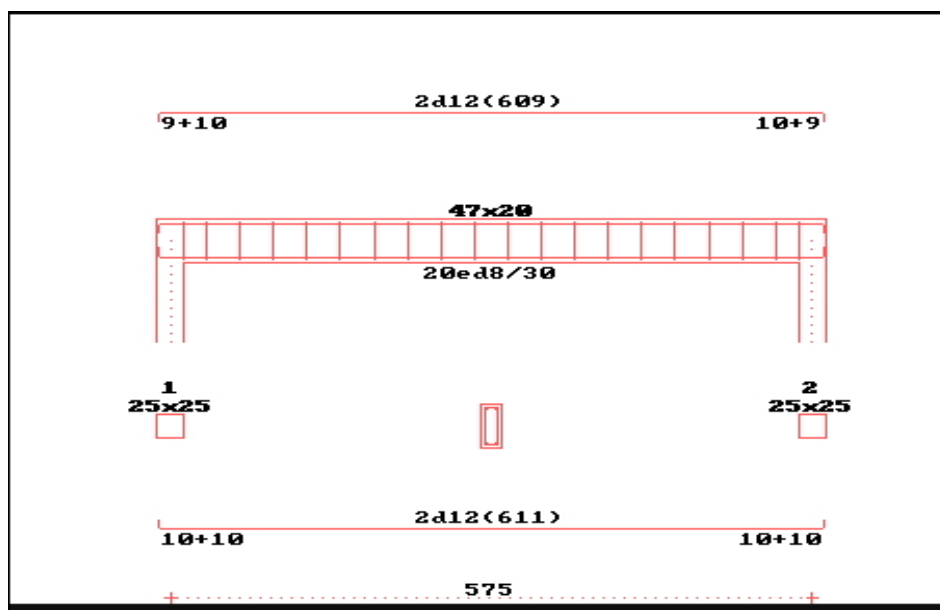
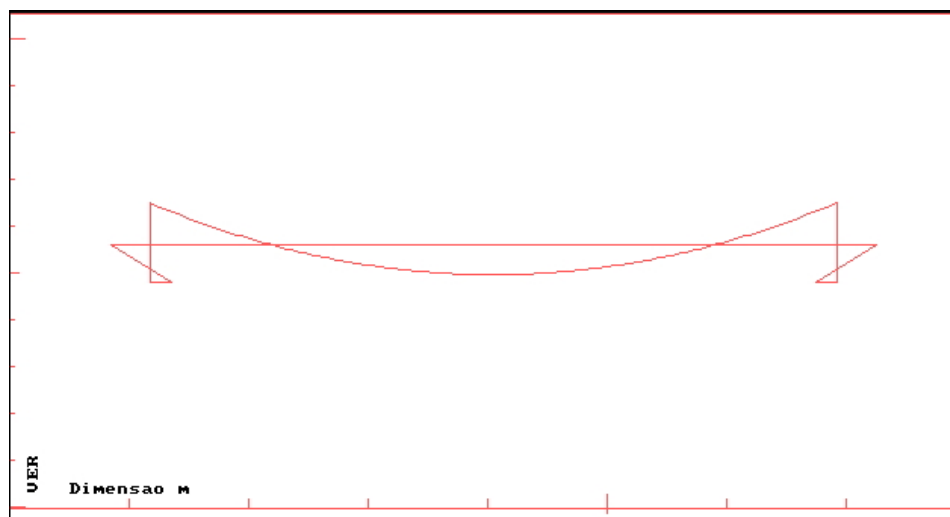
PIS.	TRAMO N. 1

PERMANENTES	
Unif. Compri.	3.647 5.750

VIGA10	2-JUN-21
=====	
ESFORÇOS EM VIGAS	

PIS.	TRAMO N. 1

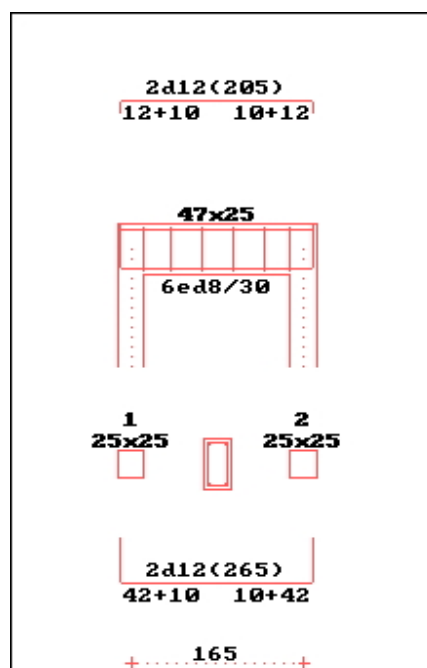
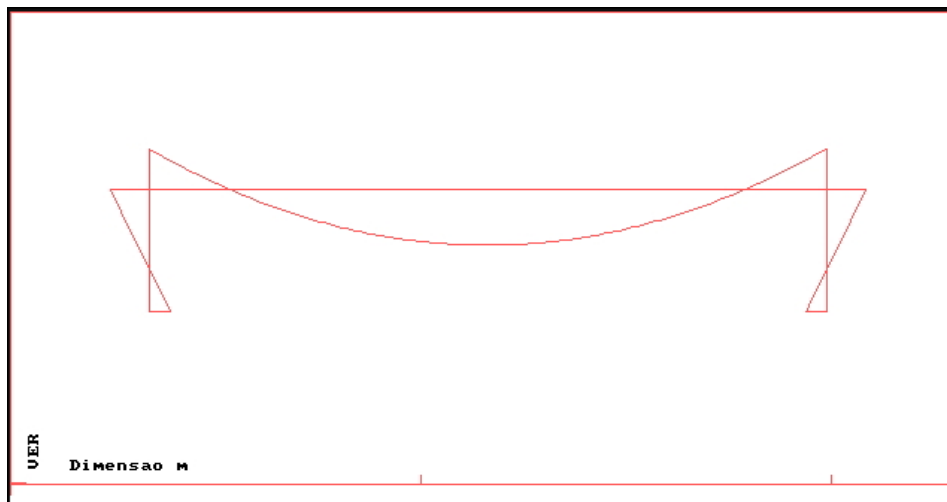
ACÇÃO VERTICAL	
Mesq. Mdir. kN.m	-8.82 -8.83
Mpos. Norm. kN	6.25 44.1
Tesq. Tdir. kN	-10.5 10.5



Viga V11

VIGA11	11-SEP-19
DADOS DE CARGAS	
PIS.	TRAMO N. 1
PERMANENTES	
Unif. Compri.	3.598 1.680

VIGA11	11-SEP-19
ESFORÇOS EM VIGAS	
PIS.	TRAMO N. 1
ACÇÃO VERTICAL	
Mesq. Mdir. kN.m	-0.51 -0.51
Mpos. Norm. kN	0.72 2.54
Tesq. Tdir. kN	-2.97 3.08



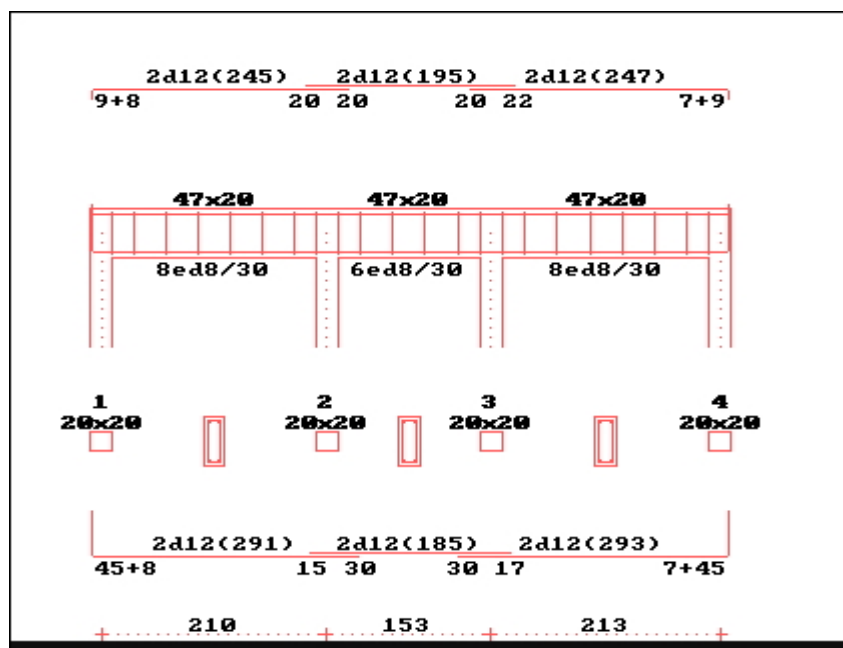
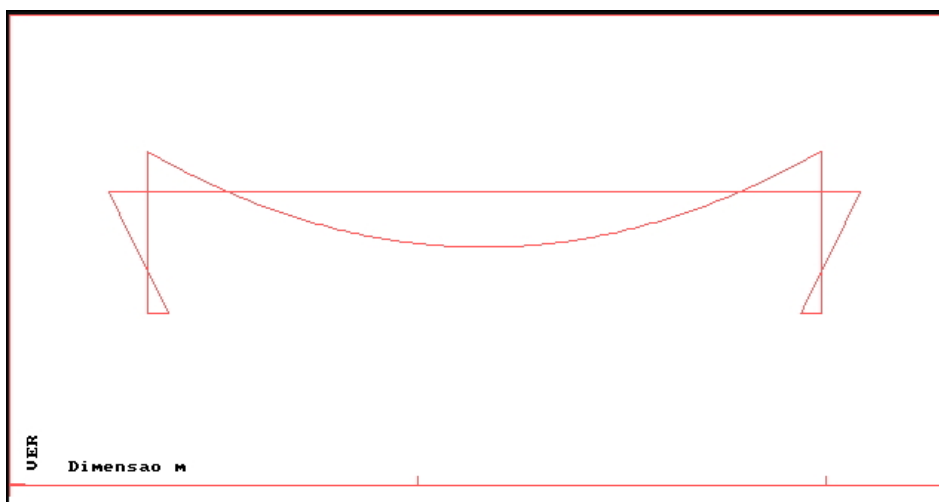
Viga V12

VIGA12							2-JUN-21
=====							
DADOS DE CARGAS							
=====							
PIS.	TRAMO	N. 1	TRAMO	N. 2	TRAMO	N. 3	
=====							
PERMANENTES							
Unif. Compri.	7.647	2.100	7.647	1.530	7.647	2.130	
=====							

VIGA11	11-SEP-19		
=====			
ESFORÇOS EM VIGAS			

PIS.	TRAMO	N. 1	

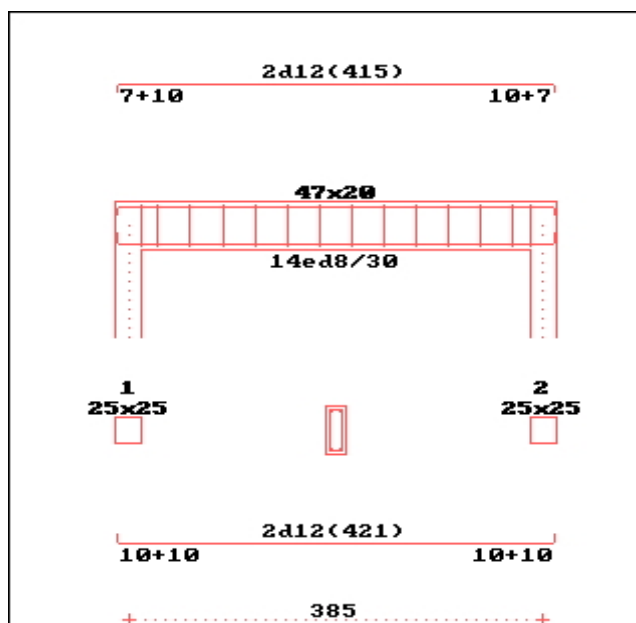
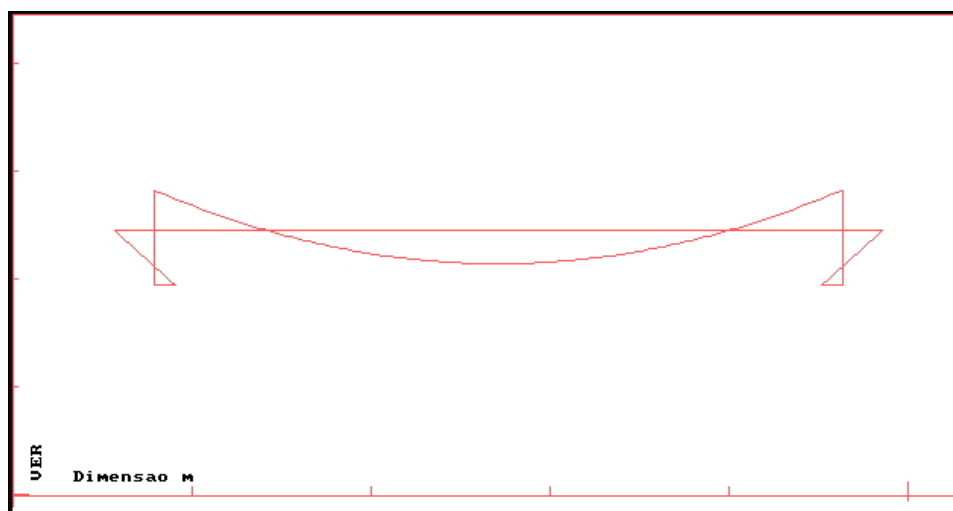
ACÇÃO VERTICAL			
Mesq. Mdir. kN.m	-0.51	-0.51	
Mpos. Norm. kN	0.72	2.54	
Tesq. Tdir. kN	-2.97	3.08	



Viga V13

VIGA13	11-SEP-19
DADOS DE CARGAS	
PIS.	TRAMO N. 1
PERMANENTES	
Unif. Compri.	3.598 3.850

VIGA13	11-SEP-19
ESFORÇOS EM VIGAS	
PIS.	TRAMO N. 1
ACÇÃO VERTICAL	
Mesq. Mdir. kN.m	-3.68 -3.68
Mpos. Norm. kN	2.98 18.4
Tesq. Tdir. kN	-6.93 6.93



PILARES (mais solicitados)

P2

PILAR P2											
piso	l	b,d	h	a1	a2	-----Calculo-----			-----Armaduras-----		
1	5.0	25	25	1	1	Nsd	Msda	Msdb	Afb	Afh	At
						145	0	0	0.0	0.0	4.5
									0.0	0.0	4.5

P4

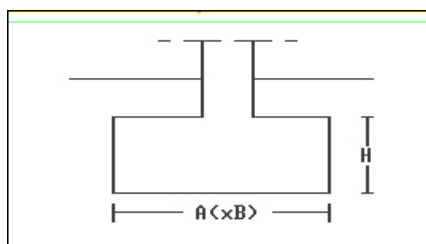
PILAR P4											
piso	l	b,d	h	a1	a2	-----Calculo-----			-----Armaduras-----		
1	3.0	25	25	1	1	Nsd	Msda	Msdb	Afb	Afh	At
						205	0	0	0.0	0.0	4.5
									0.0	0.0	4.5

P6

PILAR P6											
piso	l	b,d	h	a1	a2	-----Calculo-----			-----Armaduras-----		
1	3.5	25	25	1	1	Nsd	Msda	Msdb	Afb	Afh	At
						112	0	0	0.0	0.0	3.1
									0.0	0.0	3.1

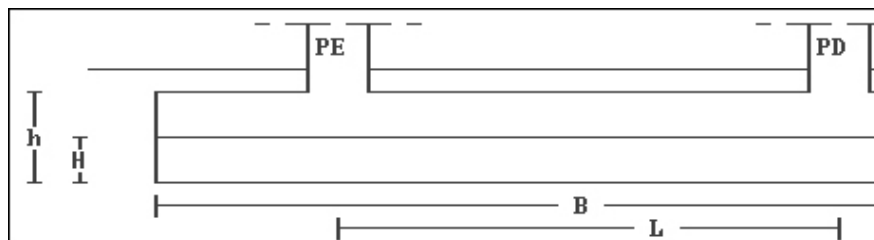
SAPATAS

S1



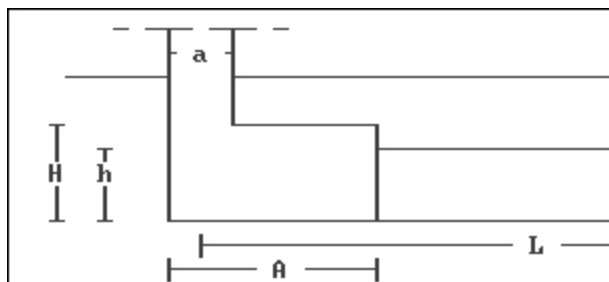
SAPATA:S1										
Tensao de calculo no terreno (MPa).....:						4.50				
PILAR: Accoes majoradas - Carga axial(kN):						85.0				
Dimensoes.....: a(m)=						0.25	b(m)= 0.25			
SAPATA: --- DIMENSOES(m) --- --- ARMADURAS (cm2) --- (m3) (Kg/m3)										
		A	B	H	dA/m	d'A	dB/m	d'B	Betao	Armad.
Quadrada		0.45	0.45	0.20	0.75	0.03	0.75	0.03	0.04	11.55
Opcao		1.10	1.10	0.30	0.87	0.10	0.87	0.10	0.36	7.38

S2



SAPATA:
 ----DIMENSOES (m)----- ARMADURAS (cm²)----- (m³) (Kg/m³)
 A B H dA/m d'A/m dB/m d'B Betao Armad.
 0.45 5.25 0.20 0.00 0.0 0.02 0.0 0.47 0.16
 Distancia da extremidade da sapata a extremidade do pilar:
 - extremidade esquerda: 0.00
 - extremidade direita: 0.00

S3



Isolada assimetrica, confinando com terreno vizinho e com lintel de equilibrio.

Tensao de calculo no terreno (MPa).....: 4.30

PILAR: Accoes majoradas: Carga axial(kN): 93.0

Dimensoes.....: a(m)= 0.25

b(m)= 0.25

Distancia entre eixos de pilares...: L(m)= 1.75

LINTEL:Dimensoes.....: b(m)= 0.25

h(m)= 0.25

Dimensoes A,a da sapata e do pilar na direccao do lintel.

Reacao no pilar adjacente(kN).....: 29.8

SAPATA:

----DIMENSOES (m)----- ARMADURAS (cm²)----- (m³) (Kg/m³)
 A B H dA/m dB/m d'B Betao Armad.
 1.10 0.45 0.20 0.22 1.10 0.1 0.10 10.12